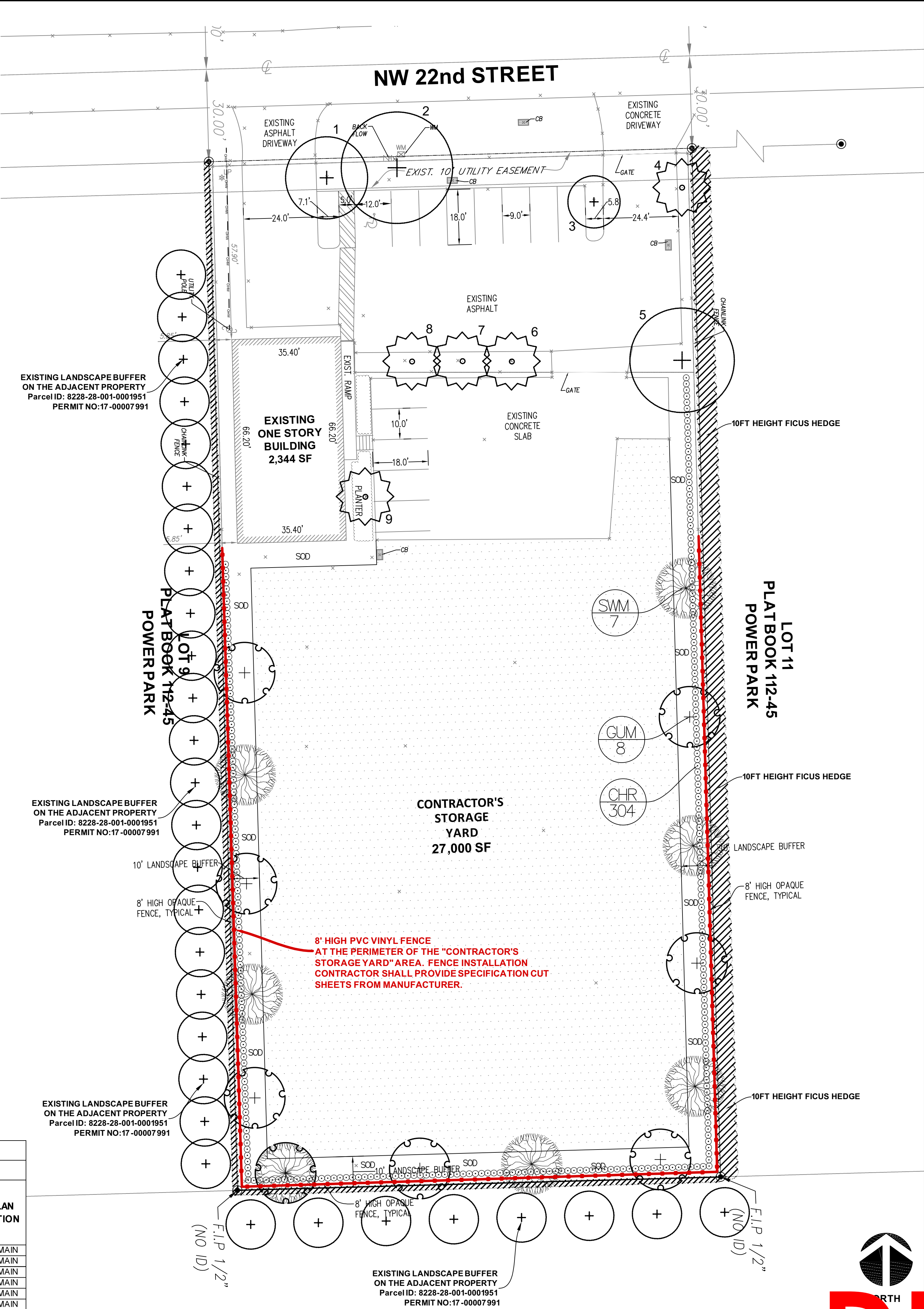


A
B
C
D
E
F
G
H

1 2 3 4 5 6 7 8 9 10 11

| EXISTING TREE SURVEY | | | | | | | |
|--|--------------------|--------------|-----------------------|---|-------------------------------------|--|---------------------------------------|
| 2240 NW 22nd St, Pompano Beach, FL 33069 | | | | | | | |
| NUMBER | BOTANICAL NAME | COMMON NAME | CALIPER D.B.H. INCHES | APPROXIMATE HEIGHT IN FEET or CLEAR TRUNK | APPROXIMATE CANOPY DIAMETER IN FEET | CONDITION Excellent = 100% Good = 80% Fair = 60% Poor = 40% Very Poor = 20% | PLAN ACTION |
| 1 | Bucida buceras | BLACK OLIVE | 15 | 30 | 20 | 60% | defected trunk leader |
| 2 | Bucida buceras | BLACK OLIVE | 22 | 35 | 30 | 60% | crossing branches |
| 3 | Bursera simaruba | GUMBO LIMBO | 12 | 25 | 20 | 60% | open wound on trunk |
| 4 | Sabal palmetto | CABBAGE PALM | | 10 | | 80% | single palm |
| 5 | Bucida buceras | BLACK OLIVE | 24 | 45 | 35 | 60% | strucutral defects, crossing branches |
| 6 | Wodyetia bifurcata | FOXTAIL PALM | | 8 | | 80% | double palm |
| 7 | Wodyetia bifurcata | FOXTAIL PALM | | 10 | | 80% | double palm |
| 8 | Wodyetia bifurcata | FOXTAIL PALM | | 10 | | 80% | double palm |
| 9 | Wodyetia bifurcata | FOXTAIL PALM | | 10 | | 80% | double palm |



LAC
LANDSCAPE ARCHITECT CONSULTANTS
5215 W. Broward Boulevard
Plantation, Florida 33317
P (954) 581-1110 F (9) 581-7118
L.C. 2005-0-022
Thomas J. Laubenthal, RLA
TOM@LACFL.COM
LA-0000563

| DATE | REVISIONS: |
|------|------------|
| | |
| | |
| | |
| | |
| | |
| | |
| | |

DATE: 09-21-20
SCALE: 1" = 20'
DRAWING BY: AD
DESIGNED BY: AD, BJF

PROJECT: 2240 NW 22nd St
BROWARD COUNTY
POMPAHO BEACH, FLORIDA
TREE INVENTORY PLAN:

PROJECT NO.
19-107
SHEET:
TS-1 of 1

